

CABINETRY QUICK MEASURE GUIDE

A QUICK START TO BEGIN YOUR KITCHEN CABINET DESIGN

SHAPE

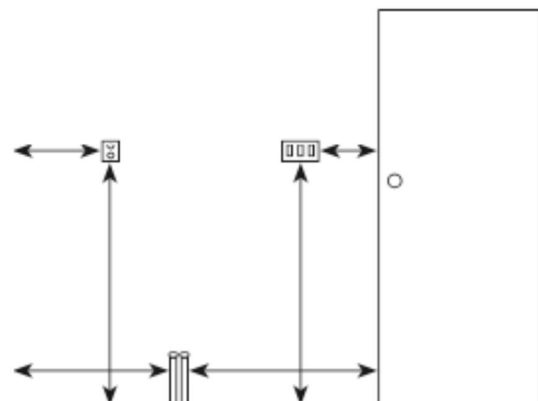
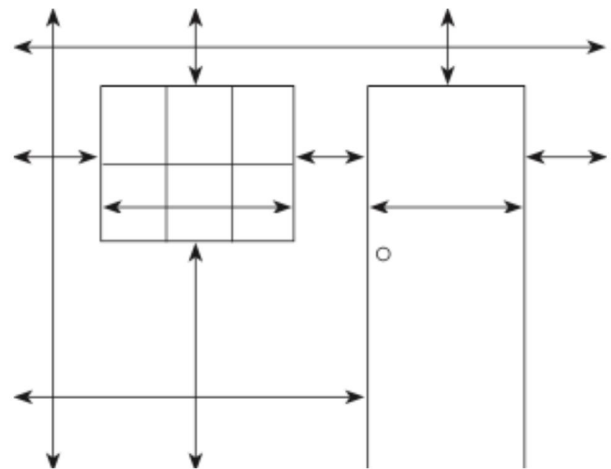
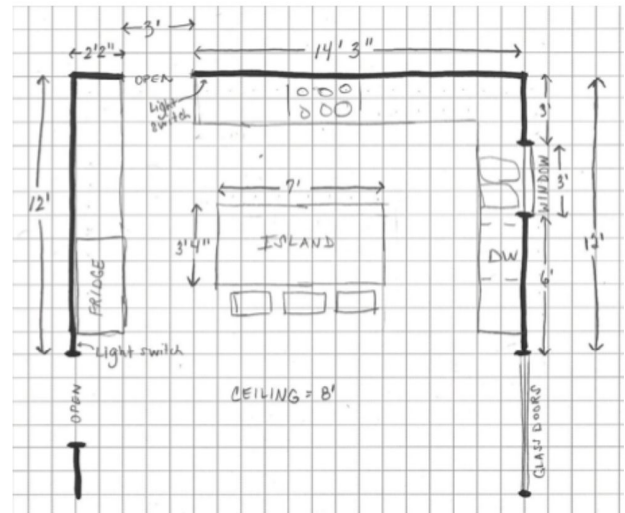
Draw your kitchen's basic shape. Be sure to include any major structural features or obstacles that may affect where cabinets can be installed. Graph paper is not necessary as long as the drawing is clear and accurate.

DETAILS

Mark the location of all windows and doors and any other openings in the space. Follow this action by marking the locations of existing plumbing, or the locations where plumbing will be moved. Notate the locations of power outlets and light switches. Then indicate locations for your refrigerator, stove, sink, etc.

MEASURE

- Measure each wall from corner to corner, as well as the ceiling height.
- Measure windows and doors from edge to edge, including casing. Measure the distance between corners of walls to the windows and doors. Measure from ceiling to each and from floor to each.
- Measure to plumbing, power outlets, and light switches.
- Measure all appliances (width, depth, and height).
- Mark all of these measurements on your drawing.



Photograph your kitchen from all angles! It helps the designer fully understand the space.

